

EndoWave The Predictable Rotary NiTi File System



EndoWave

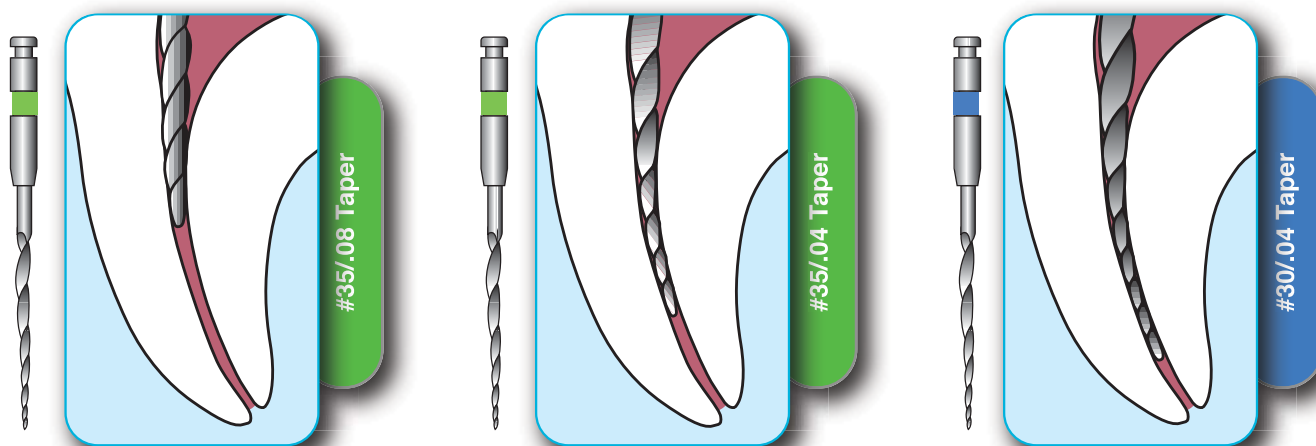


To order telephone 0800 808 855, 8am to 5.30pm
freefax 0508 808 555, 24 hours
orders@henryschein.co.nz | www.henryschein.co.nz



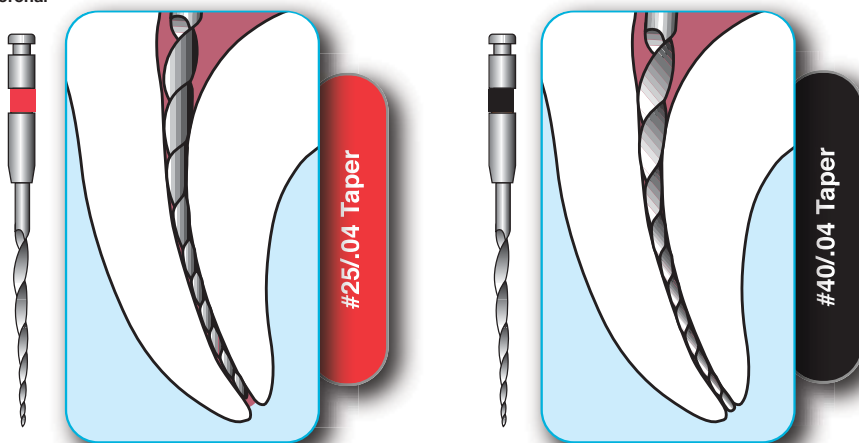
The *EndoWave* Professional Kit

Has been developed by Morita in collaboration with leading clinical Endodontists globally. EndoWave Professional is the ideal technique for new and experienced Rotary NiTi operators alike.



Step 1
Carry file #35/08 into the canal & enlarge the coronal one third of the canal

Step 2-3
Use the file #35/04 then change to #30/04 until it is approx. 2-3mm short of working length



Step 4
If possible (without resistance) go to full working length with file #25/04

Optional Step Apical Sizing
EndoWave #40/04
Is included for canals requiring a #40/04 apical stop size

- For first use, always practice instrumentation in extracted teeth
- Suggested rotational speed range is 300-500RPM. Maximum rotational speed should not exceed 600RPM
- Torque reverse settings should not exceed 90gms. The lower the operating torque reverse level, the better.
- Open good access cavities using straight line access techniques.
- Using a hand file and Dentaport ZX/Root ZX apex locator obtain accurate working lengths for all canals
- Proceed with hand files to approx ISO size #15 to create a glide path prior to introducing any rotary files
- Proceed with EndoWave rotary files, following the crown-down technique guide (see attached)
- Always introduce a rotating file. Do not stop file rotation within the canal
- Always use a small (2-3mm) reciprocating back and forth motion, apply only low pressure. Never force instruments
- Remove debris from the file flutes frequently
- Inspect files for distortions/fatigue before and after each use
- Maintain the canal patency with a hand file during rotary instrumentation
- Use copious amounts of irrigation solutions between EndoWave file sequence
- **Remember, it's not how many times the file has been used, it's how it was used!**

EndoWave Rotary NiTi Files

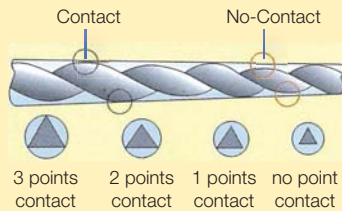
EndoWave has been designed by Morita to address the concerns of the users of current systems from other manufacturers. EndoWave has been specifically developed to increase the safety factor, the cutting efficiency and to simplify the crown-down technique which is essential for rotary nickel titanium success.

Excellent Safety Features

Minimising File Fracture & Canal Transportation

Anti-Screwing Design

Minimizing file fracture

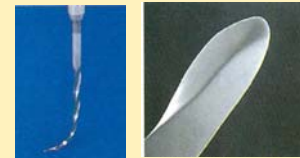


Endowave's unique "continuous wave" design requires just lower pressure advancement, significantly reducing "self-screwing" - binding in canal walls

Safety Tip

Reducing canal transportation

Tip design, excellent file flexibility & smoothness (from electropolishing) reduce canal transportation.

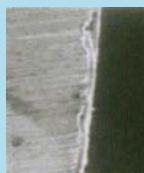


Excellent Flexibility

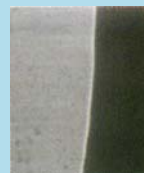
Safety Top Design

Ultra Smooth Surface

Minimizing excessive torque to file



All file systems must undergo mechanical polishing first. Smoother surfaces can be seen, but there are still rough striations that remain, which might lead to possibility of file fracture.



EndoWave has gone further... Electrochemical polishing, where each file is immersed into a chemical bath after mechanical polishing to create ultra smooth surface of file, further minimises excessive friction between the file and canal wall.



EndoWave Professional Kit

Taper	Tip Size	Length
0.08	#35	19mm
0.04	#35	21, 25 or 31mm
0.04	#30	21, 25 or 31mm
0.04	#25	21, 25 or 31mm
0.04	#40	21, 25 or 31mm



Order Form

Fax to 0508 808 555

REFILLS 21mm	Pack of 5	Qty
M-638-030-15 - 21mm Size 15 .02 Taper Yellow		
M-638-030-20 - 21mm Size 20 .02 Taper Yellow		
M-638-030-25 - 21mm Size 25 .02 Taper Yellow		
M-638-030-30 - 21mm Size 30 .02 Taper Yellow		
M-638-030-35 - 21mm Size 35 .02 Taper Yellow		
M-638-030-40 - 21mm Size 40 .02 Taper Yellow		
M-638-030-50 - 21mm Size 50 .02 Taper Yellow		
M-638-030-60 - 21mm Size 60 .02 Taper Yellow		
M-638-031-15 - 21mm Size 15 .04 Taper Red		
M-638-031-20 - 21mm Size 20 .04 Taper Red		
M-638-031-25 - 21mm Size 25 .04 Taper Red		
M-638-031-30 - 21mm Size 30 .04 Taper Red		
M-638-031-35 - 21mm Size 35 .04 Taper Red		
M-638-031-40 - 21mm Size 40 .04 Taper Red		
M-638-032-15 - 21mm Size 15 .06 Taper Blue		
M-638-032-20 - 21mm Size 20 .06 Taper Blue		
M-638-032-25 - 21mm Size 25 .06 Taper Blue		
M-638-032-30 - 21mm Size 30 .06 Taper Blue		
M-638-032-35 - 21mm Size 35 .06 Taper Blue		
M-638-032-40 - 21mm Size 40 .06 Taper Blue		
M-638-032-45 - 21mm Size 45 .06 Taper Blue		
M-638-032-50 - 21mm Size 50 .06 Taper Blue		
REFILLS 31mm	Pack of 5	Qty
M-780-534 - 31mm Size 20 .04 Taper Red		
M-780-535 - 31mm Size 25 .04 Taper Red		
M-780-536 - 31mm Size 30 .04 Taper Red		
M-780-537 - 31mm Size 35 .04 Taper Red		
M-780-538 - 31mm Size 40 .04 Taper Red		
M-780-559 - 31mm Size 45 .04 Taper Red		
M-780-560 - 31mm Size 50 .04 Taper Red		
M-780-561 - 31mm Size 60 .04 Taper Red		
M-780-540 - 31mm Size 20 .06 Taper Blue		
M-780-541 - 31mm Size 25 .06 Taper Blue		
M-780-542 - 31mm Size 30 .06 Taper Blue		
M-780-543 - 31mm Size 35 .06 Taper Blue		
M-780-544 - 31mm Size 40 .06 Taper Blue		
M-780-546 - 31mm Size 50 .06 Taper Blue		
M-780-539 - 31mm Size 15 .06 Taper Blue		
M-780-540 - 31mm Size 20 .06 Taper Blue		
M-780-541 - 31mm Size 25 .06 Taper Blue		
M-780-542 - 31mm Size 30 .06 Taper Blue		
M-780-543 - 31mm Size 35 .06 Taper Blue		
M-780-544 - 31mm Size 40 .06 Taper Blue		
M-780-545 - 31mm Size 45 .06 Taper Blue		
M-780-546 - 31mm Size 50 .06 Taper Blue		

REFILLS 25mm	Pack of 5	Qty
M-638-040-15 - 25mm Size 15 .02 Taper Yellow		
M-638-040-20 - 25mm Size 20 .02 Taper Yellow		
M-638-040-25 - 25mm Size 25 .02 Taper Yellow		
M-638-040-30 - 25mm Size 30 .02 Taper Yellow		
M-638-040-35 - 25mm Size 35 .02 Taper Yellow		
M-638-040-40 - 25mm Size 40 .02 Taper Yellow		
M-638-040-50 - 25mm Size 50 .02 Taper Yellow		
M-638-040-60 - 25mm Size 60 .02 Taper Yellow		
M-638-041-15 - 25mm Size 15 .04 Taper Red		
M-638-041-20 - 25mm Size 20 .04 Taper Red		
M-638-041-25 - 25mm Size 25 .04 Taper Red		
M-638-041-30 - 25mm Size 30 .04 Taper Red		
M-638-041-35 - 25mm Size 35 .04 Taper Red		
M-638-041-40 - 25mm Size 40 .04 Taper Red		
M-780-556 - 25mm Size 45 .04 Taper Red		
M-780-557 - 25mm Size 50 .04 Taper Red		
M-780-558 - 25mm Size 60 .04 Taper Red		
M-638-042-15 - 25mm Size 15 .06 Taper Blue		
M-638-042-20 - 25mm Size 20 .06 Taper Blue		
M-638-042-25 - 25mm Size 25 .06 Taper Blue		
M-638-042-30 - 25mm Size 30 .06 Taper Blue		
M-638-042-35 - 25mm Size 35 .06 Taper Blue		
M-638-042-40 - 25mm Size 40 .06 Taper Blue		
M-638-042-45 - 25mm Size 45 .06 Taper Blue		
M-638-042-50 - 25mm Size 50 .06 Taper Blue		
PROFESSIONAL KIT		Qty
M-780-550 - ENDOWAVE Professional Kit Size 21mm .04 Taper Pack of 5		
M-780-551 - ENDOWAVE Professional Kit Size 25mm .04 Taper Pack of 5		
M-780-552 - ENDOWAVE Professional Kit Size 31mm .04 Taper Pack of 5		
PROCEDURE KIT A		Qty
M-638000 - ENDOWAVE Kit A 31mm .06 #20,25 #30 /.02 #15. 19mm.08 #35		
M-638-001 - ENDOWAVE Kit A 21mm .06 #20,25 #30 /.02 #15. 19mm.08 #35		
M-638-010 - ENDOWAVE Kit A 25mm .06 #20,25 #30 /.02 #15. 19mm.08 #35		
REFILLS 19mm		Qty
M-638-020 - ENDOWAVE File 19mm Size 35 .08 Taper Green Pack of 5		
M-638-021 - ENDOWAVE File 19mm Size 40 10 Taper Black Pack of 5		

DENTIST'S NAME: _____ HSS ACCOUNT NO: _____

ADDRESS: _____

ORDER DETAILS: _____

PHONE No: _____ FAX No: _____



To order telephone 0800 808 855, 8am to 5.30pm
freefax 0508 808 555, 24 hours
orders@henryschein.co.nz | www.henryschein.co.nz

